

# CHEMISAFE®

SAFETY STORAGE CABINETS

Za porudžbina do kraja godine  
-10%



## FIRE MY11 TYPE 90



### SAFETY CABINETS FOR THE STORAGE OF FLAMMABLE PRODUCTS WITH 90 MINUTES FIRE CLASS CERTIFIED RESISTANCE ACCORDING TO EN14470-1, EN 14727 NORMS.

Completely manufactured from 1 - 1,5 mm thickness steel sheet, cold pressed, epoxy coated with acid resistant epoxy powders electro-statically applied at a temperature of 200 °C, which ensures a layer thickness higher than 90 microns on the whole surface of the cabinet.

Special insulation with rock-wool fibers' high density panels (Fiberceramic exempt) resistant to high temperatures (800 °C) and panels of calcium sulphate. Internal finishing with MFC panels, resistant to acid and corrosive vapours.

#### Certification as from EN 14470-1 and 14727 norms.

- **Automatic door closure** in case the ambient temperature exceeds 47 °C (according to market).
- **Lock with key and door blockage.**
- **Feet adjustment level.**
- **90 minutes certified valves close the ventilation holes** when the temperature exceeds 70 °C; one is placed on the roof for extraction, one on the bottom to guarantee the extraction of heavy vapours.
- **Air extraction duct collar 100 mm diam. placed** on top of the safety cabinet.
- **Anti-sparking hinges.**
- **3 cm thermo-expanding gasket (DIN 1402).**
- **no. 3 epoxy coated or stainless steel shelves** on stainless steel supports, height adjustable.
- **Bottom sump** with draining grid which allows a bigger storage volume.
- **Grounding connection** on top of the cabinet to prevent electrostatic charges.



FIRE MY11 - Model 120

### FIRE MY11 MODELS 120: TEST LAPI n° 1583.0EN100/10

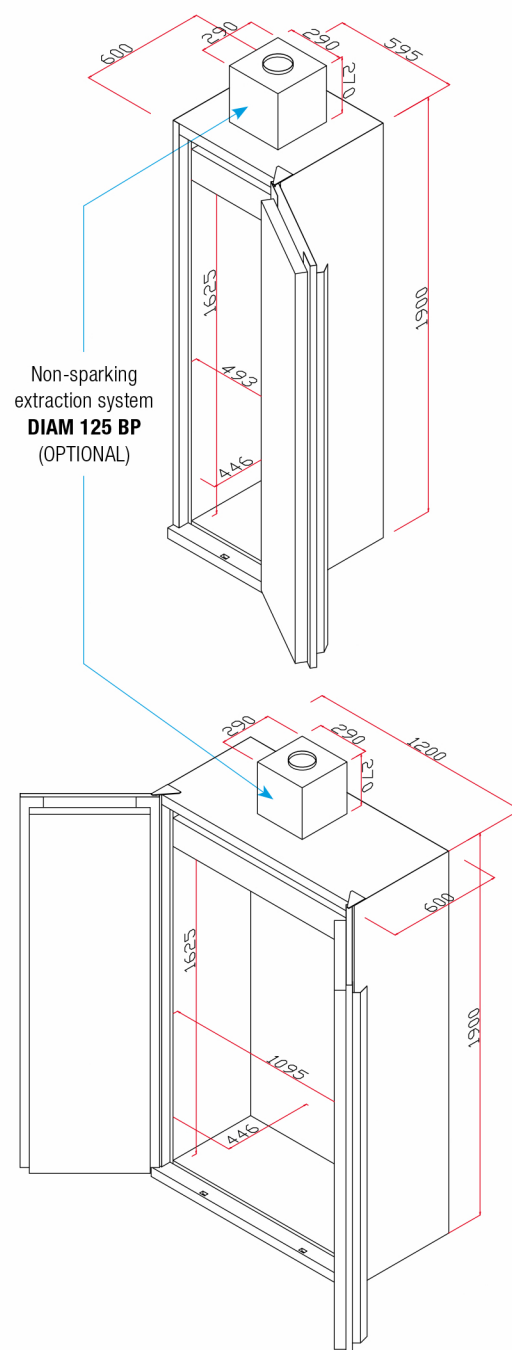
CODE	FIRE MY11 MODELS 120 TYPE 90	EXTERNAL DIMENSIONS W x D x H mm	INTERNAL DIMENSIONS W x D x H mm	CAPACITY No. OF 1 LITER BOTTLES EACH CABINET	WEIGHT Kg	No. OF SHELVES DIMENSIONS W x D x H mm CAPACITY (liters)	EPOXY COATED BOTTOM SUMP WITH DRAINING GRID DIMENSIONS W x D x H mm CAPACITY (liters)
CSF232BMY11	BASIC FIRE MY11 120 Type 90 *	1200 x 600 x 1950	1095 x 446 x 1540	160 / 200	350	No. 3 epoxy coated tray shelves, height adjustable. Certified loading capacity 80 Kg 1094 x 420 x 39 - about 16 liters	1094 x 445 x 100 about 45 liters
CSF232MY11	EASY FIRE MY11 120 Type 90 *	1200 x 600 x 1950	1095 x 446 x 1540	160 / 200	350	No. 3 stainless steel tray shelves, height adjustable. Certified loading capacity 80 Kg 1094 x 420 x 39 - about 16 liters	1094 x 445 x 100 about 45 liters

Add "Y" to the code for yellow safety cabinet.

## FIRE MY11 TYPE 90



FIRE MY11 - Model 60



***New closing system  
which allows  
to keep the doors open.  
Automatic door closing  
in case the ambient  
temperature exceeds 47 °C.***

## FIRE MY11 MODELS 120: TEST LAPI n° 1583.0EN100/10

CODE	FIRE MY11 MODELS 120 TYPE 90	EXTERNAL DIMENSIONS W x D x H mm	INTERNAL DIMENSIONS W x D x H mm	CAPACITY No. OF 1 LITER BOTTLES EACH CABINET	WEIGHT Kg	No. OF SHELVES DIMENSIONS W x D x H mm CAPACITY (liters)	EPOXY COATED BOTTOM SUMP WITH DRAINING GRID DIMENSIONS W x D x H mm CAPACITY (liters)
CSF239BMY11	BASIC FIRE MY11 60 Type 90 * **	595 x 600 x 1950	493 x 446 x 1540	80 / 100	210	No. 3 epoxy coated tray shelves, height adjustable. Certified loading capacity 60 Kg 493 x 420 x 39 - about 7 liters	493 x 445 x 100 about 20 liters
CSF239MY11	EASY FIRE MY11 60 Type 90 * **	595 x 600 x 1950	493 x 446 x 1540	80 / 100	210	No. 3 stainless steel tray shelves, height adjustable. Certified loading capacity 60 Kg 493 x 420 x 39 - about 7 liters	493 x 445 x 100 about 20 liters

\* Add "Y" to the code for yellow safety cabinet. \*\* Add "D" to the item code for safety cabinet with handle on the right/ hinges on the left and "S" for handle on the left and hinges on the right.

## BIG FIRE MY11 TYPE 90



### BIG SAFETY CABINETS FOR THE STORAGE OF FLAMMABLE PRODUCTS WITH 90 MINUTES FIRE CLASS CERTIFIED RESISTANCE ACCORDING TO EN14470-1, EN 14727 NORMS.

Completely manufactured from 1 - 1,5 mm thickness steel sheet, cold pressed, epoxy coated with acid resistant epoxy powders electro-statically applied at a temperature of 200 °C, which ensures a layer thickness higher than 90 microns on the whole surface of the cabinet.

Special insulation with rock-wool fibers' high density panels (Fiberceramic exempt) resistant to high temperatures (800 °C) and panels of calcium sulphate.

Internal finishing with MFC panels, resistant to acid and corrosive vapours.

#### Certification as from EN 14470-1 and 14727 norms.

- **Automatic door closure** in case the ambient temperature exceeds 47 °C (according to market).
- **Lock with key and door blockage.**
- **Feet adjustment level.**
- **90 minutes certified valves close the ventilation holes** when the temperature exceeds 70 °C;  
one is placed on the roof for extraction,  
one on the bottom to guarantee the extraction of heavy vapours.
- **Air extraction duct collar 100 mm diam.**  
placed on top of the safety cabinet.
- **Anti-sparking hinges.**
- **3 cm thermo-expanding gasket** (DIN 1402).
- **No. 3 epoxy coated or stainless steel shelves**  
on stainless steel supports, height adjustable.
- **Bottom sump** with draining grid which allows a bigger storage volume.
- **Grounding connection** on top of the cabinet to prevent electrostatic charges.



CODE	BIG FIRE MY11 90 TYPE 90	EXTERNAL DIMENSIONS W x D x H mm	INTERNAL DIMENSIONS W x D x H mm	CAPACITY No. OF 1 LITER BOTTLES EACH CABINET	WEIGHT Kg	No. OF SHELVES DIMENSIONS W x D x H mm CAPACITY (liters)	EPOXY COATED BOTTOM SUMP WITH DRAINING GRID DIMENSIONS W x D x H mm CAPACITY (liters)
CSF240BMY11	BASIC BIG FIRE MY11 90 Type 90 * **	895 x 600 x 1950	795 x 446 x 1540	128 / 160	275	No. 3 epoxy coated tray shelves, height adjustable. Certified loading capacity 80 kg 794 x 420 x 39 - about 13 liters	795 x 445 x 100 33 litri circa
CSF240MY11	EASY BIG FIRE MY11 90 Type 90 * **	895 x 600 x 1950	795 x 446 x 1540	128 / 160	275	No. 3 stainless steel tray shelves, height adjustable. Certified loading capacity 80 kg 794 x 420 x 39 - about 13 liters	795 x 445 x 100 33 litri circa

\* Add "Y" to the code for yellow safety cabinet. \*\* Add "D" to the item code for safety cabinet with handle on the right/ hinges on the left and "S" for handle on the left and hinges on the right.



B 60 G 30



B 120 G 30

## SAFETY CABINETS FOR COMPRESSED GAS CYLINDERS



Entirely built in electro-galvanized sheet steel with thickness of mm 1/1,5/2, bent with cold pressing with monolithic external structure varnished with anti-acid epoxy paint and passage into thermal gallery at 200 °C.

Special insulation of calcium silicate (DIN 4102) releasing water molecules to lower the inner temperature in case of fire; Mineral wool panels for high temperatures (800 °C) - **free from Ceramic Fiber fixed with ceramic bonding agent.**

**Certification in compliance with new norm EN 14470-2.**

- SAFETY LOCK WITH KEY.
- Certified automatic locking SYSTEM (70/100 °C) for air inlet and outlet piping,
- Non-sparking natural iron HINGE with brass pin.
- Thermo-expanding GASKET (DIN 4102).
- ARRANGEMENT FOR PIPING PASSAGE.
- CLOSING SHEET RAMP FOR EASY REPLACEMENT OF CYLINDERS.
- POSSIBILITY OF ADJUSTABLE SHELVES FOR SMALL CYLINDERS (1 included).





CODE	DESCRIPTION	
BASIC TYPE 90 MY11 SAFETY CABINETS FOR LIQUID AND SOLID INFLAMMABLES - EN 14470-1		
CSF232BMY11	FIRE 120 BASIC - 120X60X195H - no. 3 epoxy shelves + epoxy bottom sump with grid (50°C doors close included) -10%	€ 2.250,00
CSF240BMY11D	FIRE 90 BASIC - HANDLE ON THE RIGHT - LEFT HINGE- 90X60X195H - no. 3 epoxy shelves + epoxy bottom sump with grid (50°C doors close included) -10%	€ 1.680,00
CSF240BMY11S	FIRE 90 BASIC - HANDLE ON THE LEFT - RIGHT HINGE - 90X60X195H - no. 3 epoxy shelves + epoxy bottom sump with grid (50°C doors close included) -10%	€ 1.680,00
CSF239BMY11D	FIRE 60 BASIC - HANDLE ON THE RIGHT - LEFT HINGE - 60X60X195H - no. 3 epoxy shelves + epoxy bottom sump with grid (50°C doors close included) -10%	€ 1.500,00
CSF239BMY11S	FIRE 60 BASIC - HANDLE ON THE LEFT - RIGHT HINGE - 60X60X195H - no. 3 epoxy shelves + epoxy bottom sump with grid (50°C doors close included) -10%	€ 1.500,00
GAS CYLINDERS SAFETY CABINETS EN 14470-2		
B120G30	GAS CYLINDERS SAFETY CABINETS B120G30 for 3/4 Gas cylindres - 120X60X205H -10%	€ 2.415,00
B60G30	GAS CYLINDERS SAFETY CABINETS B60G30 for 1/2 Gas cylinders - 60x60x205H -10%	€ 1.900,00

